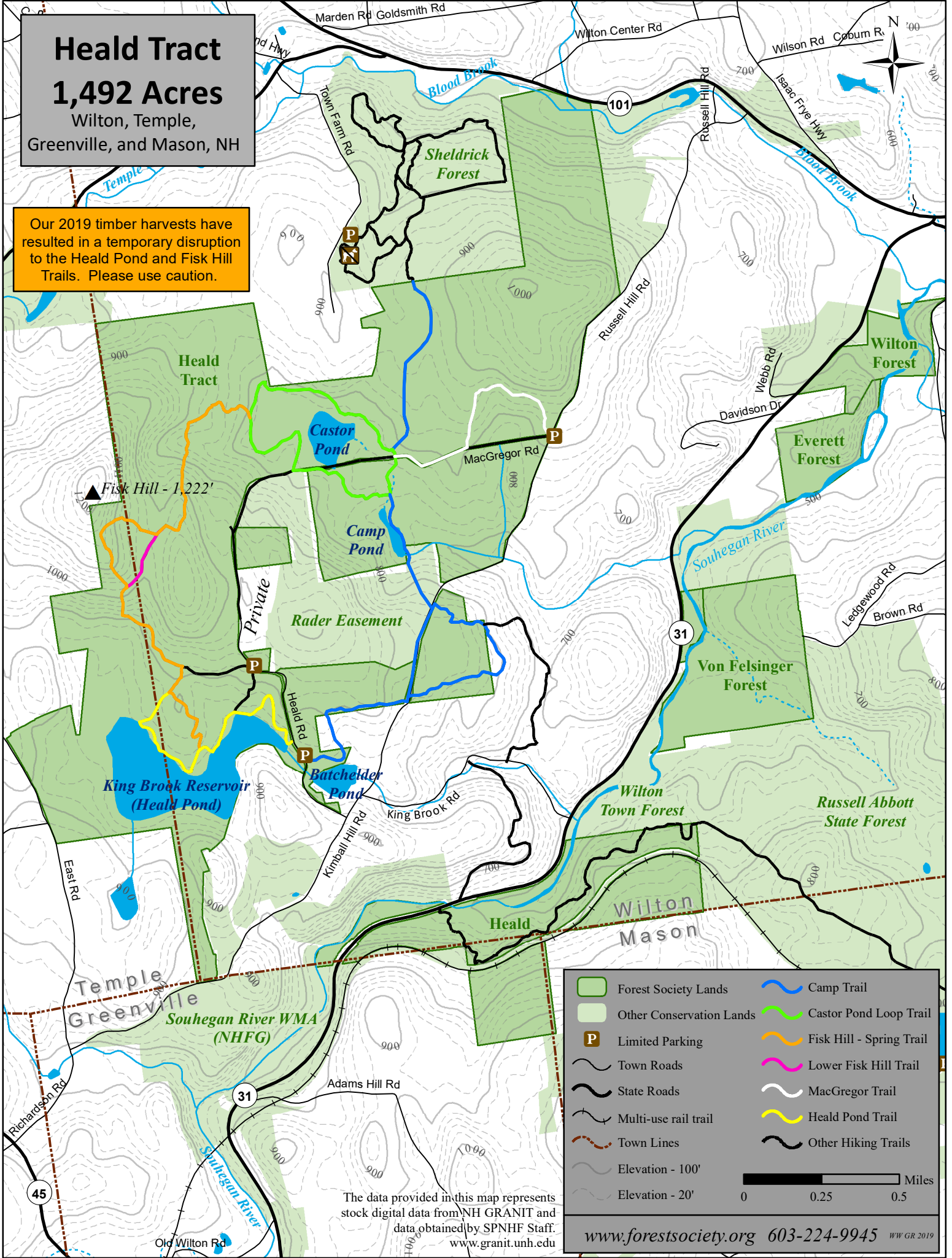


Heald Tract

1,492 Acres

Wilton, Temple,
Greenville, and Mason, NH

Our 2019 timber harvests have resulted in a temporary disruption to the Heald Pond and Fisk Hill Trails. Please use caution.



- | | | | |
|--|--------------------------|--|--------------------------|
| | Forest Society Lands | | Camp Trail |
| | Other Conservation Lands | | Castor Pond Loop Trail |
| | Limited Parking | | Fisk Hill - Spring Trail |
| | Town Roads | | Lower Fisk Hill Trail |
| | State Roads | | MacGregor Trail |
| | Multi-use rail trail | | Heald Pond Trail |
| | Town Lines | | Other Hiking Trails |
| | Elevation - 100' | | |
| | Elevation - 20' | | |

The data provided in this map represents stock digital data from NH GRANIT and data obtained by SPNHF Staff. www.granit.unh.edu